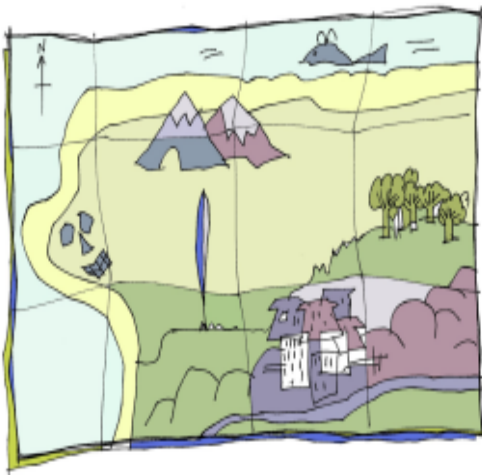


Monsters

Year 6 Workbook

Activity 8



One of my favourite things about reading children's books is when you find a map right at the beginning of the land in the story. I keep referring to the map as they talk about the different locations and settings in the story. I am sure that you have done the same. I thought it would be a great idea for you to design and draw your own map of where your giant lives.

- ★ **Step 1: draw the outline of your map**
- ★ **Step 2: fill in the landmarks: trees, rivers, boulders, mountains, volcano, cities, sea, swamps**
- ★ **Step 3: make up names for the different areas of your map**
- ★ **Step 4: stain the map to make it look old by using a used (and cool) tea bag to turn the paper brown. You don't need to get it that wet for it to change colour**
- ★ **Step 5: When it is dry, cut or rip the edges of the paper to make it look old and worn. A small hole in the middle of the map can look great**

