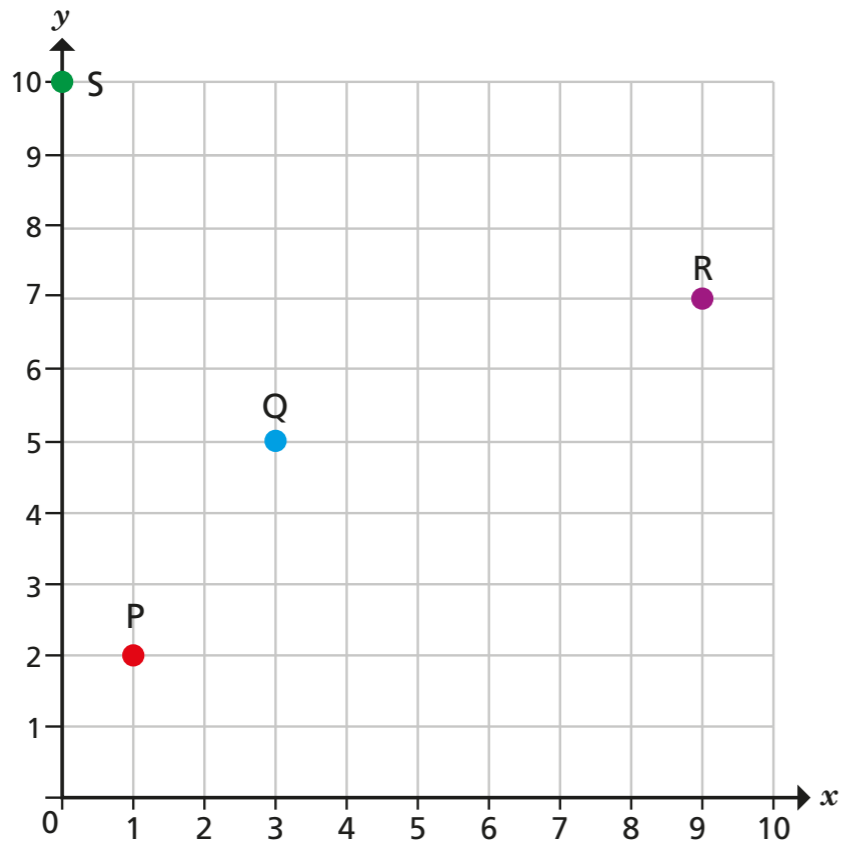


Translations

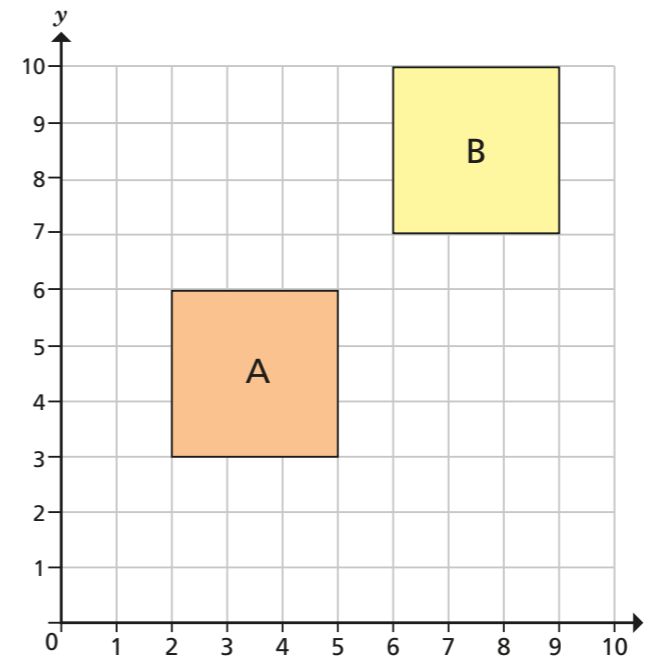
1



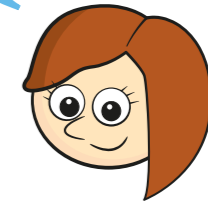
Describe the translations.

- a) From P to Q is right and up
- b) From Q to R is right and up
- c) From R to S is left and up
- d) From S to P is right and down
- e) From Q to P is left and down
- f) From R to Q is left and down
- g) From S to R is right and down
- h) From P to S is left and up

2



The translation from A to B is 1 right and 1 up.



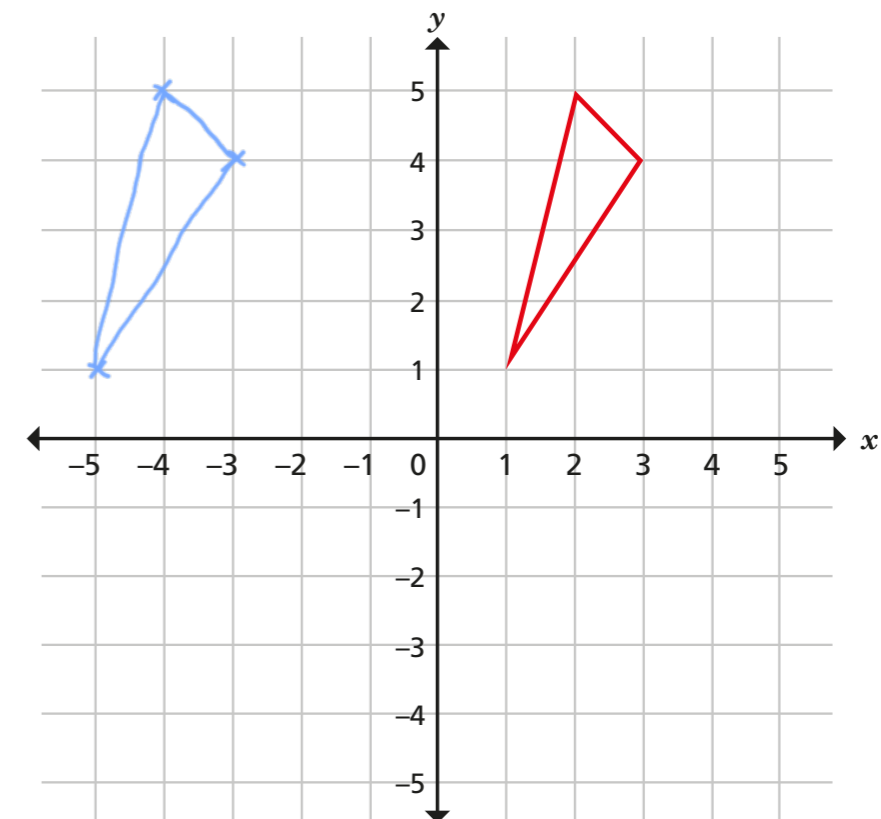
Do you agree with Rosie? No

Explain your answer.

She has looked at the corners closest to each other not the corresponding corners on each shape.

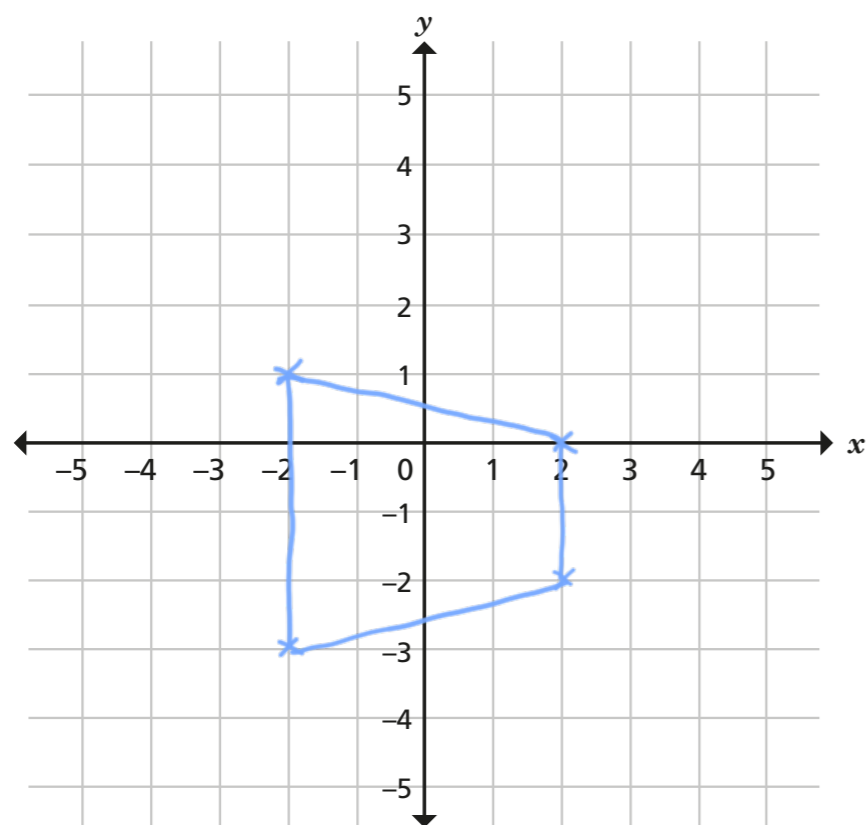
3

Translate the triangle 6 left.

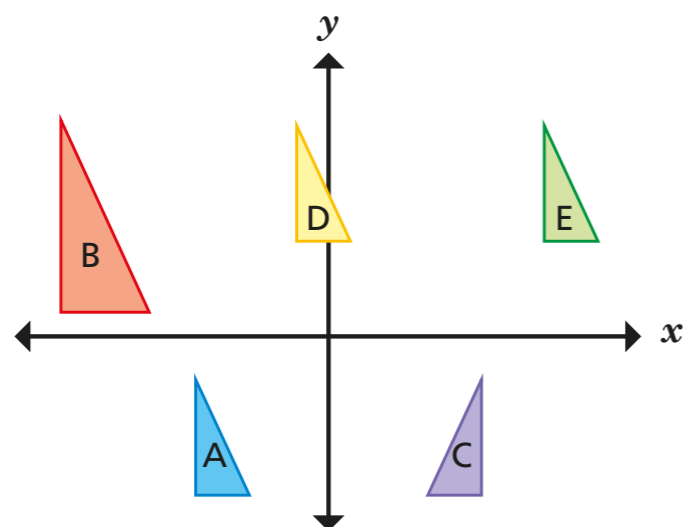


- 4 These coordinates form a quadrilateral: $(-5, 5)$, $(-5, 1)$, $(-1, 4)$, $(-1, 2)$
It is translated 3 right and 4 down.

Draw the quadrilateral on the grid in its new position.



5



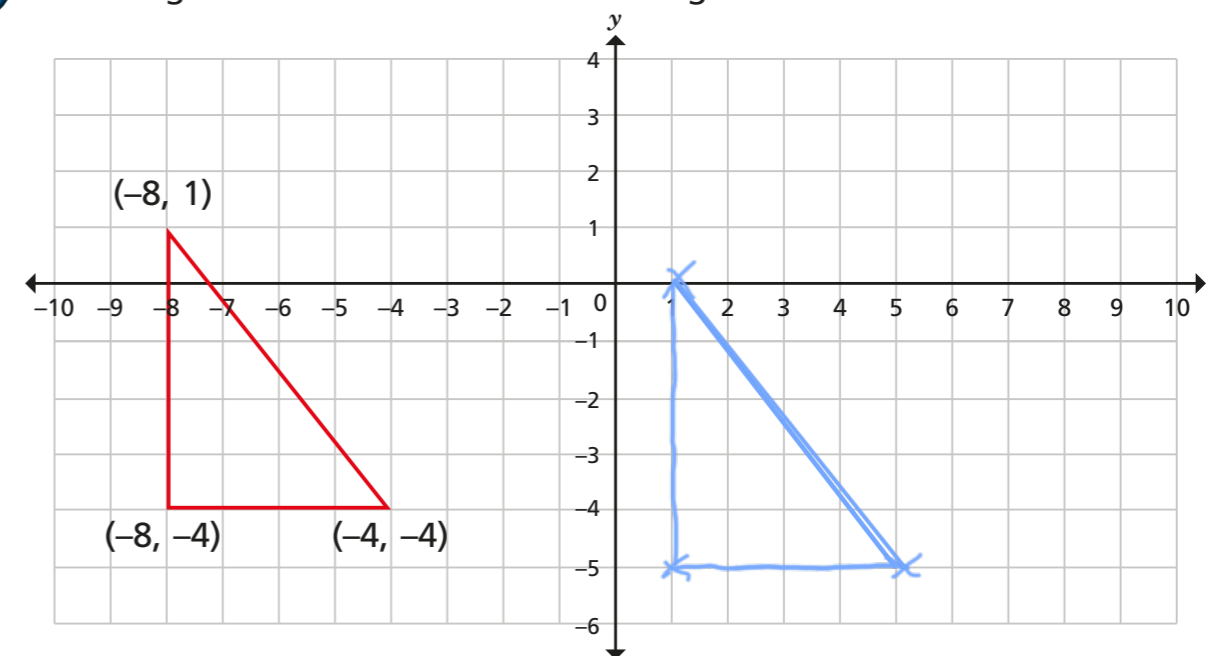
Which triangles are translations of each other?

A, D and E

Explain why the others are not translations.



- 6 A triangle is drawn on the coordinate grid.

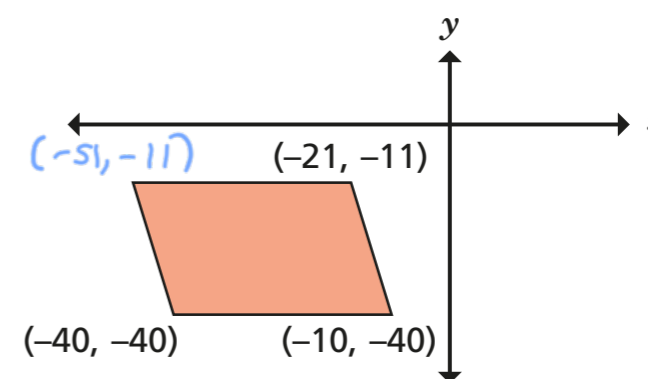


- a) Translate the triangle 9 right and 1 down.
b) Tick the correct box for each coordinate.

Point	Inside the new triangle	Outside the new triangle	On the perimeter of the new triangle
$(0, 0)$		✓	
$(4, -5)$			✓
$(2, -1)$		✓	
$(-6, -3)$		✓	
$(3, -4)$	✓		



7



This parallelogram has been translated 50 left and 25 down.

What were the coordinates of **all four** vertices before it was translated?

$(-1, 14)$ $(29, 14)$ $(10, -15)$ $(40, -15)$