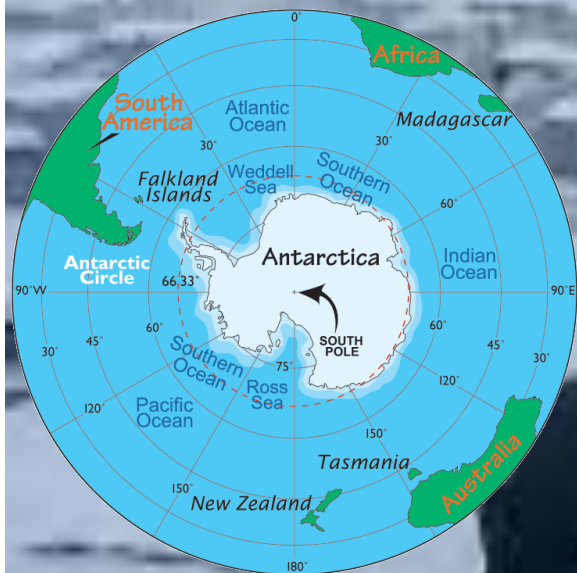
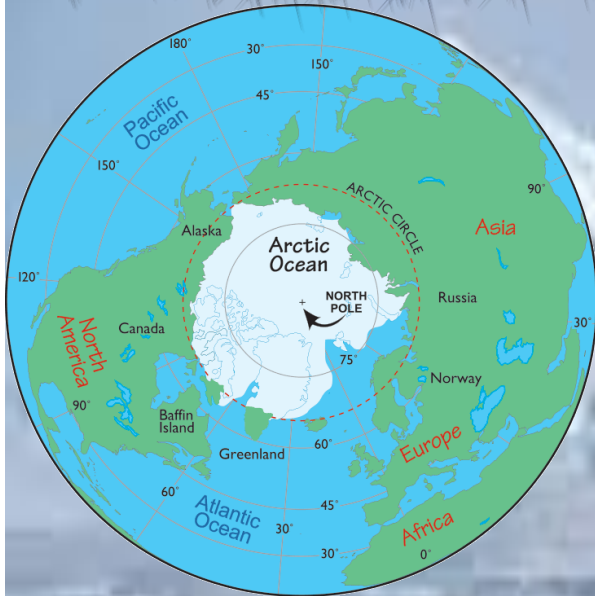


FROZEN KINGDOMS

St Agnes Year 6 Knowledge Organiser



Key Knowledge

| | |
|--|---|
| 7 Continents | Asia, Africa, North America, South America, Europe, Oceania (Australasia) |
| 5 Oceans | Arctic, Pacific, Atlantic, Indian, Southern |
| Time zones | Countries all over the world are divided into 24 time zones, based on longitudinal lines. |
| Prime / Greenwich Meridian | An imaginary line from North to South Pole which runs through Greenwich, UK. It is 0° longitude. |
| Greenwich Mean Time | GMT is the clock time at the Royal Observatory in Greenwich, London. It also referred to as Universal Coordinated Time, or UTC. When the sun is at its highest point over the Prime Meridian, it is 12:00 noon at Greenwich. |
| Facts about the Arctic | <ul style="list-style-type: none"> -The Arctic region is made up of parts of 8 countries in N America and Europe -It has a number of natural resources, including fish, oil, gas and various minerals. -Almost entirely covered in water, most of which is frozen. |
| Facts about Antarctica | <ul style="list-style-type: none"> -It is the coldest, driest, windiest continent. It is considered a desert because of its low rainfall. -98% of the continent is covered in ice -There are no permanent residents -It is very important for scientific research. Different countries have research centres there. |
| Risks to the environment of Polar Regions | <ul style="list-style-type: none"> -Climate change -Exploitation of natural resources -Tourism -Pollution |

Key vocabulary:

| | |
|-------------|---|
| tundra | The belt of land between the arctic ice sheet and the treeline. |
| permafrost | The underground layer of soil that remains frozen all year. |
| ozone layer | Prevents harmful ultraviolet rays from the sun from entering the Earth's atmosphere. |
| umiak | A type of boat used by the Inuit when hunting whales. |
| pelt | Another name for an animal's fur. |
| camouflage | Used by animals to hide themselves in their surroundings. |
| Arctic | This region is made up of the Arctic Ocean and the northern lands of North America, Europe, and Asia. It is the Polar Region around the North Pole. |
| Antarctica | This region is made up of a large continent and the surrounding oceans and islands. It is the Polar Region around the South Pole. |
| Pack-ice | Ice formed by frozen sea water which is not attached to land and floats free in the sea. |
| Terrain | Comes from the Latin word terra meaning "earth." Terrain means the specific features of an area of land. |
| Hemisphere | Half of a sphere, such as the Earth. |
| Equator | An imaginary line drawn on the Earth spaced equally between the North and South Pole. |
| Ecosystem | An environment and the living things in it. |
| Indigenous | People born in a particular place, natives. |