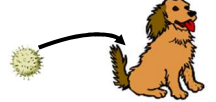


If an **animal** eats a fruit, often the **seeds** will come out in their poo!



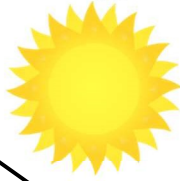
PLANTS

Sometimes seeds will **stick** to the **fur** of an animal



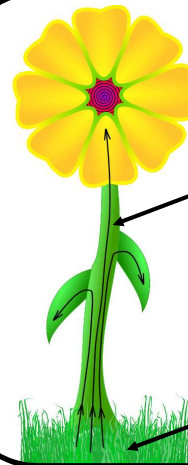
flowers

Responsible for **reproduction**. The **colour** and **aroma** (smell) **attract insects** to the plant so that **pollination** can take place



stem

The **stem** transports the **water** and **nutrients** to the different parts



Water and **nutrients** are taken in by the **roots**

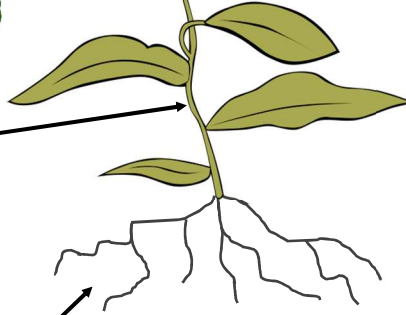
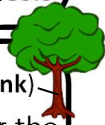
leaves

The leaves use **light** from the **sun** and **carbon dioxide** to make **food** for the plant. A process called **photosynthesis**



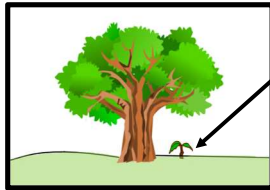
stem (or trunk)

The **stem** is responsible for the **transportation** of **water** and **nutrients** to the different parts. It also holds the plant **upright**



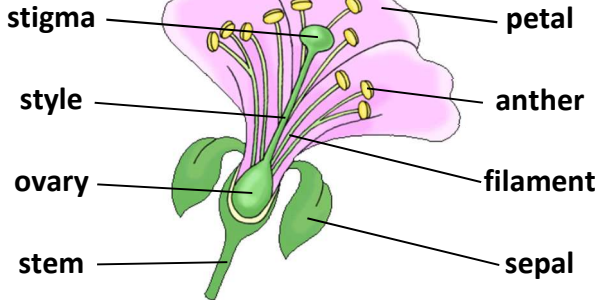
roots

The **roots** take in **water** and **nutrients** from the **soil**. They also **anchor** the plant and help it stay **upright**



This **young tree** will struggle to survive. The **large tree** is taking most of the **water/nutrients** from the **soil** and **blocking out** the **light**

Parts of a Flower



Plant Reproduction

All living things need to **reproduce** (create young) for the **species** to **survive**



POLLINATION

Pollen is blown by the **wind** or carried by an **insect** from one **flower** to another



FERTILISATION

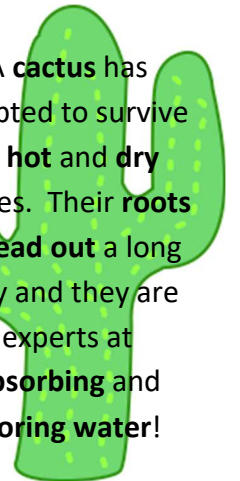
The **pollen** travels to the **ovary** of the other flower and a **fruit** begins to grow



SEED DISPERSAL

Seeds are **dispersed** (spread out) by either the **wind** or by **animals**

A **cactus** has adapted to survive in **hot and dry** places. Their **roots spread out** a long way and they are experts at **absorbing** and **storing water!**



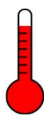
For a **plant** to be **healthy** and to **grow** it needs the correct amount of...



light



water



warmth



air



nutrients and space

(**too much** or **too little** of these things could **damage** or even **kill** the **plant**)

Plants **can't** grow on the moon because there is **no water** or **air**. It is also either far **too hot** or far **too cold!**

